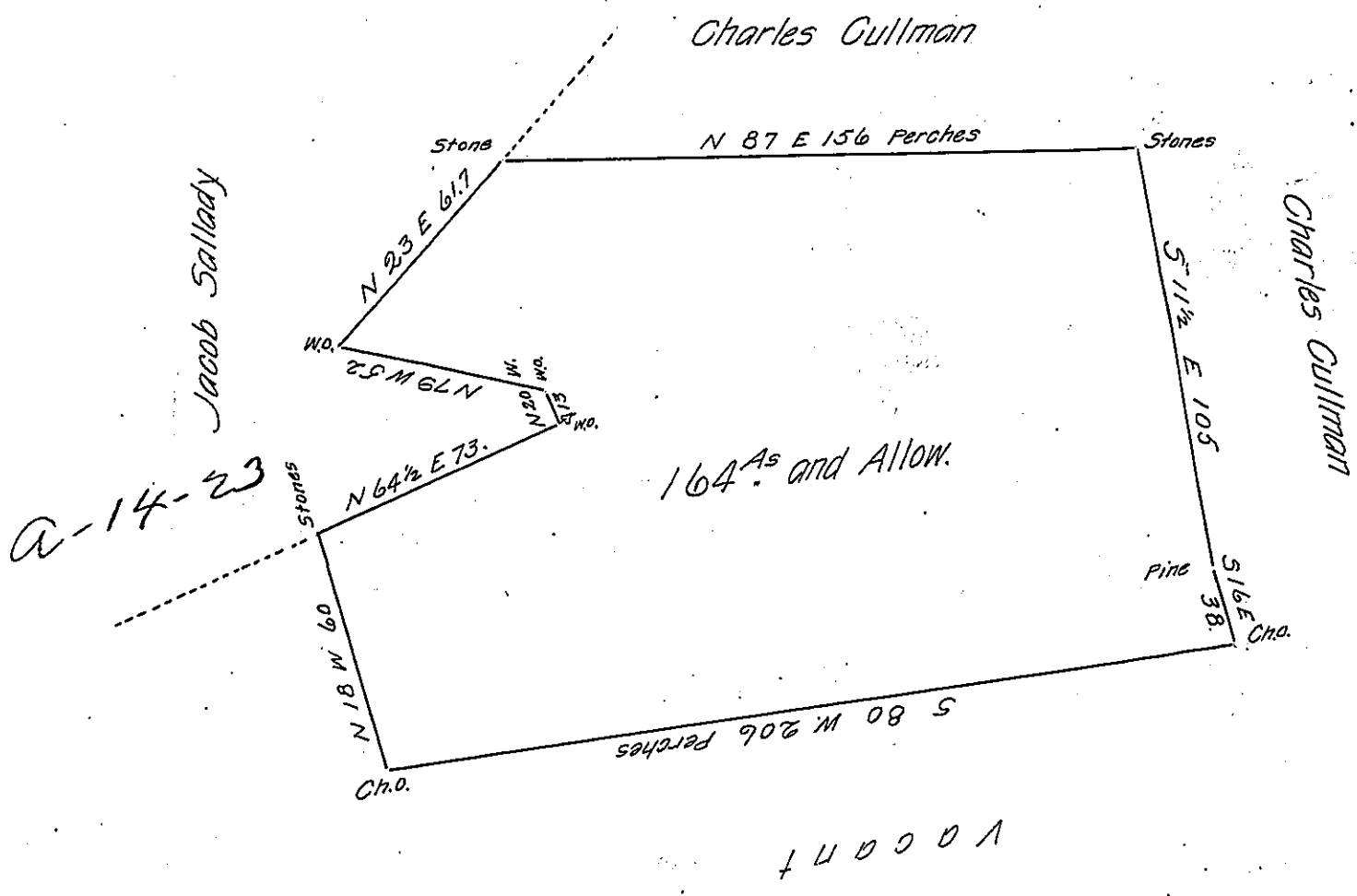


C-192-235-



Surveyed Decr. 20th 1816 for Samuel Shaffstall the above described tract of land situate in Ikens Township Dauphin County containing One hundred and sixty four acres and allowance of six per cent by his warrant dated March 4th 1816.

Thomas Smith D.S.

To Richard T. Leech Esquire }
 Surveyor General Pa. }

IN TESTIMONY that the above is a copy of the original remaining on file in the Department of Internal Affairs of Pennsylvania, made conformably to an Act of Assembly approved the 16th day of February, 1833, I have hereunto set my Hand and caused the Seal of said Department to be affixed at Harrisburg, this seventh day of January 1907.

Leach Brown
 Secretary of Internal Affairs.